

EasyDS 1.2

Version 1.2.0

USER MANUAL

EPSoft International Pte. Ltd.

13th July 2006

TABLE OF CONTENTS

1. Change History	3
2. Configuration File of EasyDS module.....	4
3. Embedded Web Server (EWS) setting	5
4. MFP pre check list requirements	7
5. Install the EasyDS Module	9
6. Important Actions upon EasyDS Installation	14
7. List of Supported MFP	18
8. Limitations	18
9. Tips and Troubleshooting.....	19

EasyDS 1.2 User Manual

1. Change History

EasyDS Change History

Update Date	Updated By	Version	Change Description
25/01/2006	EPSOFT	1.0.0	Initial version
01/02/2006	EPSOFT	1.0.1	Add information for download site
03/03/2006	EPSOFT	1.0.2	Update on the EasyDS configuration files
06/04/2006	EPSOFT	1.0.3	Update on the EasyDS setup and configuration files
05/05/2006	EPSOFT	1.1.0	Upgraded version of EasyDS 1.0 to 1.1 (Enable the detection of fax module installed function)
13/07/2006	EPSOFT	1.2.0	Upgraded version of EasyDS 1.1 to 1.2 (Enable the staple function and new localized icons for Email buttons)

User Manual Change History

Update Date	Updated By	Version	Change Description
20/01/2006	Andy	1.0.0	Initial version
01/02/2006	EPSOFT	1.0.1	Add information for download site
13/02/2006	Andy	1.0.2	Revised version of the EasyDS manual
06/04/2006	Andy	1.0.3	2 nd revision of the EasyDS manual
05/05/2006	Andy	1.0.4	3 rd revision of the EasyDS manual
10/05/2006	Andy	1.0.5	Update info on Firmware Datecode (p.18)

2. Configuration File of EasyDS module

1. EasyDS firmware for MFP

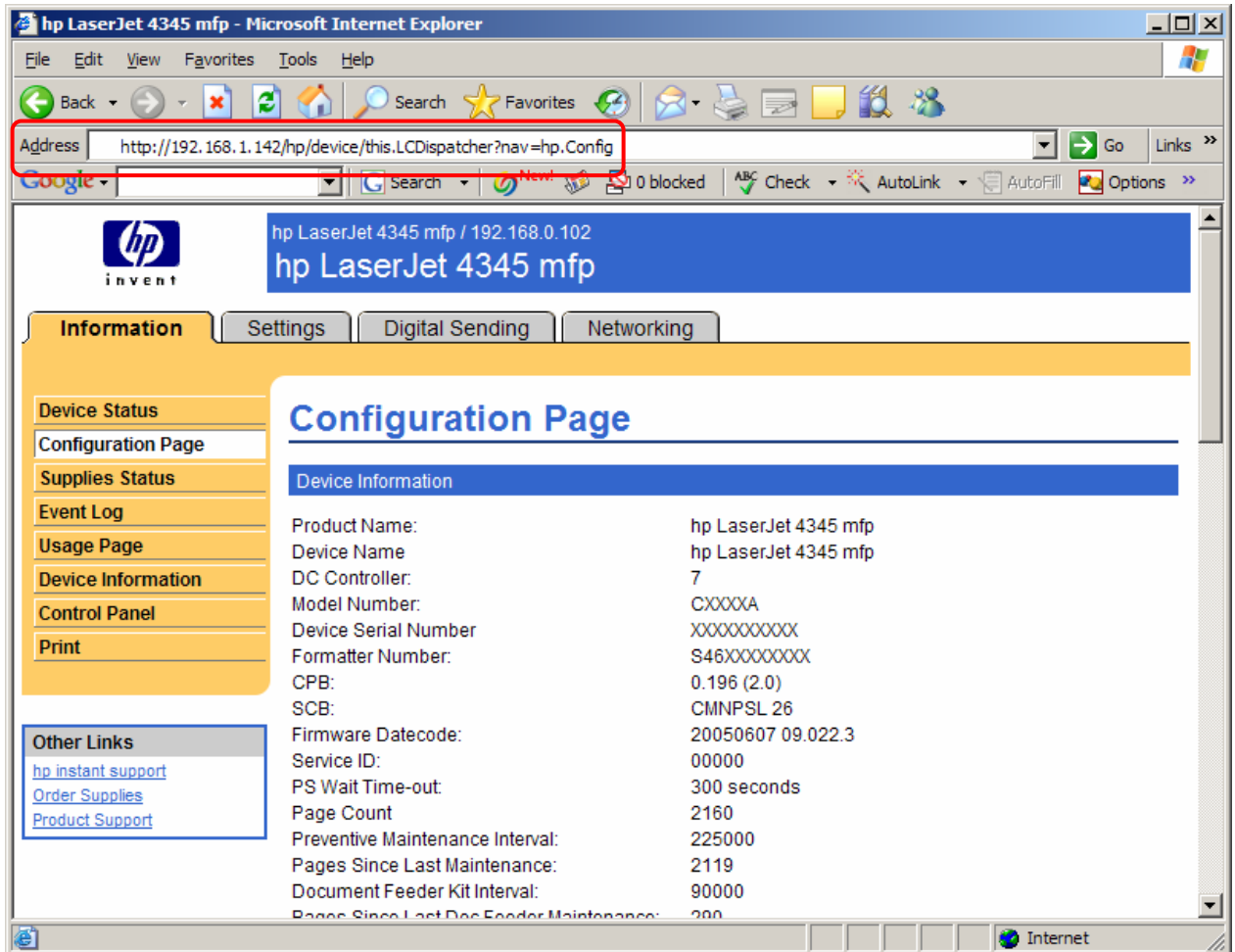
You can download these files at <http://www.myepsoft.com/hp-mfp> and please make sure to unzip all the downloaded files before installation.

File	Sub-File Name	Updated	Version	Description
Chinese Version	curl.exe	13/07/2006	1.0.1	Setup files for Simplified Chinese localization
	EasyDS.jar		1.2.0	
	EpSoftGUI.jar		1.2.0	
	EPSoftHPFunctionalInterface.jar		1.2.0	
	hp_laserjet_cgui_80.jar		DSE2.5	
	hp_laserjet_scancontrol_80.jar		DSE2.5	
	install.bat		1.2.0	
	uninstall.bat		1.2.0	
	wait.exe		1.0.1	
Korean Version	curl.exe	13/07/2006	1.0.1	Setup files for Korean localization
	EasyDS.jar		1.2.0	
	EpSoftGUI.jar		1.2.0	
	EPSoftHPFunctionalInterface.jar		1.2.0	
	hp_laserjet_cgui_80.jar		DSE2.5	
	hp_laserjet_scancontrol_80.jar		DSE2.5	
	EasyDS.jar		1.2.0	
	EpSoftGUI.jar		1.2.0	
	wait.exe		1.0.1	
Japanese version	curl.exe	13/07/2006	1.0.1	Setup files for Japanese localization
	EasyDS.jar		1.2.0	
	EpSoftGUI.jar		1.2.0	
	EPSoftHPFunctionalInterface.jar		1.2.0	
	hp_laserjet_cgui_80.jar		DSE2.5	
	hp_laserjet_scancontrol_80.jar		DSE2.5	
	EasyDS.jar		1.2.0	
	EpSoftGUI.jar		1.2.0	
	wait.exe		1.0.1	

3. Embedded Web Server (EWS) setting

Please follow the instruction settings as shown below.

1. Insert the MFP IP Address on the Internet web browser. For example the IP of the selected MFP is 192.168.1.142.
After key in the IP Address, you will be able to see the page that is similar shown in example below.



hp LaserJet 4345 mfp - Microsoft Internet Explorer

Address: <http://192.168.1.142/hp/device/this.LCDispatcher?nav=hp.Config>

hp LaserJet 4345 mfp / 192.168.0.102
hp LaserJet 4345 mfp

Information Settings Digital Sending Networking

Device Status
Configuration Page
Supplies Status
Event Log
Usage Page
Device Information
Control Panel
Print

Other Links
[hp instant support](#)
[Order Supplies](#)
[Product Support](#)

Configuration Page

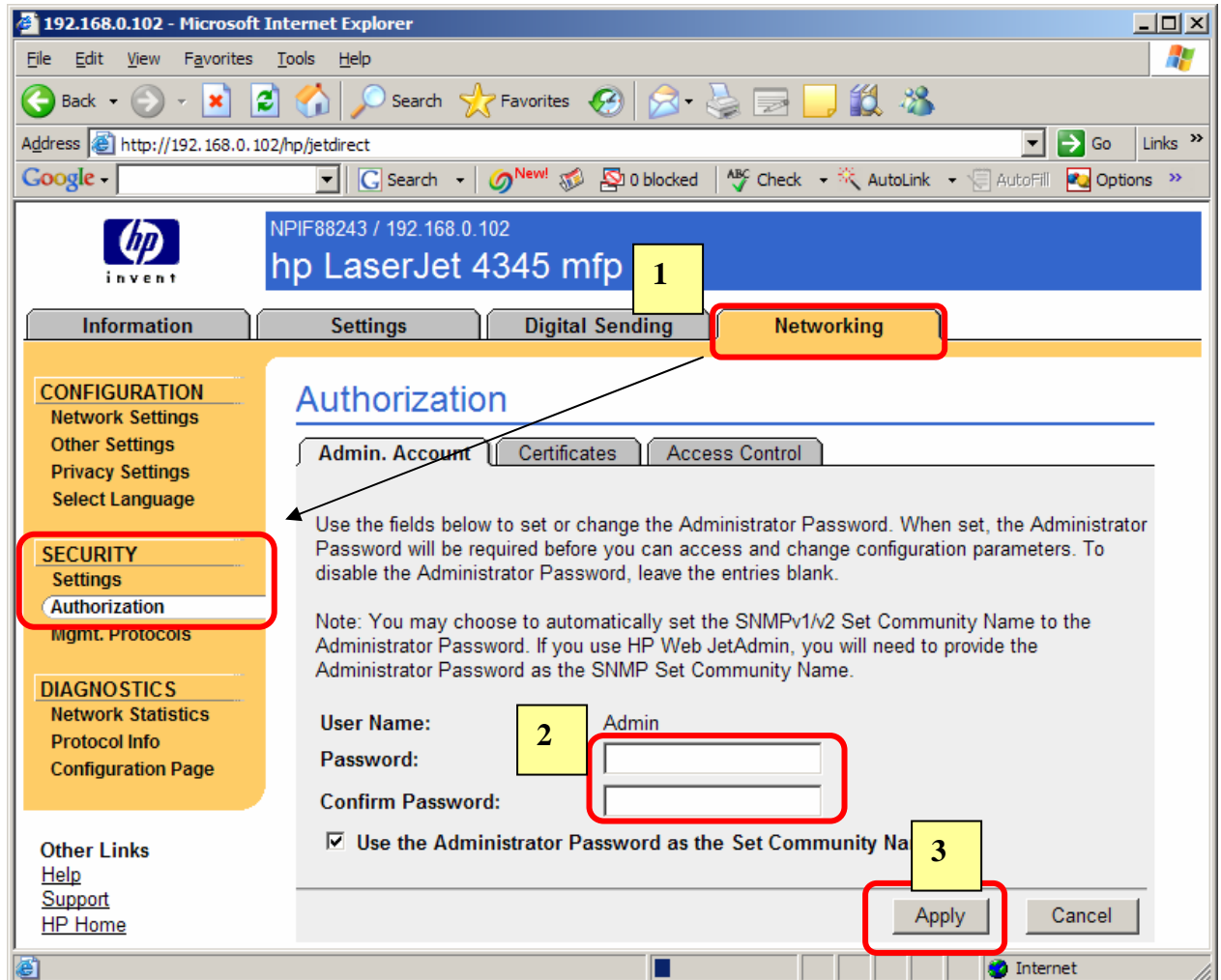
Device Information

Product Name:	hp LaserJet 4345 mfp
Device Name	hp LaserJet 4345 mfp
DC Controller:	7
Model Number:	CXXXXA
Device Serial Number	XXXXXXXXXX
Formatter Number:	S46XXXXXXXX
CPB:	0.196 (2.0)
SCB:	CMNPSL 26
Firmware Datecode:	20050607 09.022.3
Service ID:	00000
PS Wait Time-out:	300 seconds
Page Count	2160
Preventive Maintenance Interval:	225000
Pages Since Last Maintenance:	2119
Document Feeder Kit Interval:	90000
Pages Since Last Doc Feeder Maintenance:	200

2. Before installing the EasyDS files to the MFP, You have to set the password on the MFP.

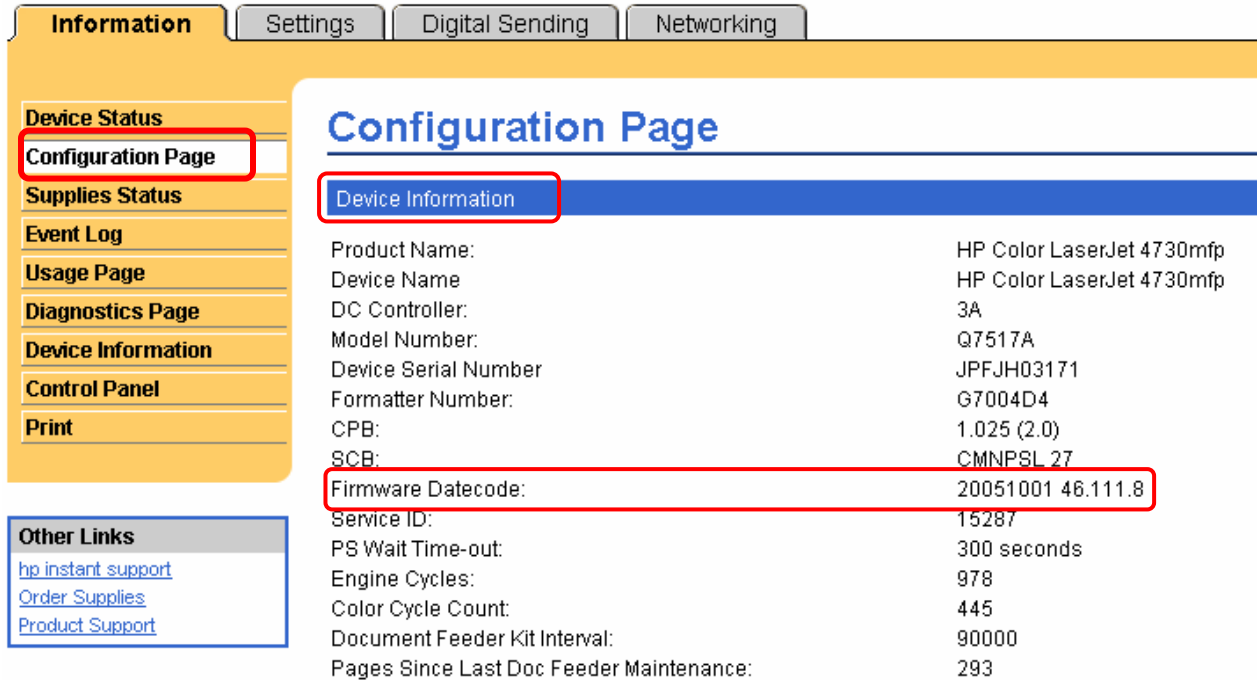
Here are the Steps taken:

1. Click Networking tab -> Security -> Authorization
2. Type in the Password and Confirm Password
The password is: **epsoft.**
3. Click Apply.



4. MFP pre check list requirements

- A. Firmware version : **20050105 08.011.5** or higher
 To check your MFP firmware version, please type your MFP IP Address at the web browser.
 Click Information tab -> Configuration page -> Printer/Device Information
 The MFP firmware version is shown in the Firmware Datecode



The screenshot shows the 'Configuration Page' for an HP Color LaserJet 4730mfp. The 'Device Information' tab is selected, and the 'Firmware Datecode' is highlighted with a red box, showing the value '20051001 46.111.8'. The left sidebar contains navigation options like 'Device Status', 'Configuration Page', 'Supplies Status', 'Event Log', 'Usage Page', 'Diagnostics Page', 'Device Information', 'Control Panel', and 'Print'. The 'Other Links' section includes 'hp instant support', 'Order Supplies', and 'Product Support'.

Configuration Page	
Device Information	
Product Name:	HP Color LaserJet 4730mfp
Device Name	HP Color LaserJet 4730mfp
DC Controller:	3A
Model Number:	Q7517A
Device Serial Number	JPFJH03171
Formatter Number:	G7004D4
CPB:	1.025 (2.0)
SCB:	CMNPSL 27
Firmware Datecode:	20051001 46.111.8
Service ID:	15287
PS Wait Time-out:	300 seconds
Engine Cycles:	978
Color Cycle Count:	445
Document Feeder Kit Interval:	90000
Pages Since Last Doc Feeder Maintenance:	293

B. Memory : 256MB or higher

C. Harddisk : 10MB free disk

To check your MFP memory, and Harddisk requirement, please type the MFP IP Address at the web browser.

Click Information tab -> Configuration page -> Installed Personalities and Options

To check the MFP memory, it is shown in DIMM slot 1 or DIMM slot 2

To check the Harddisk capacity, refer to the DISK Storage

Installed Personalities and Options

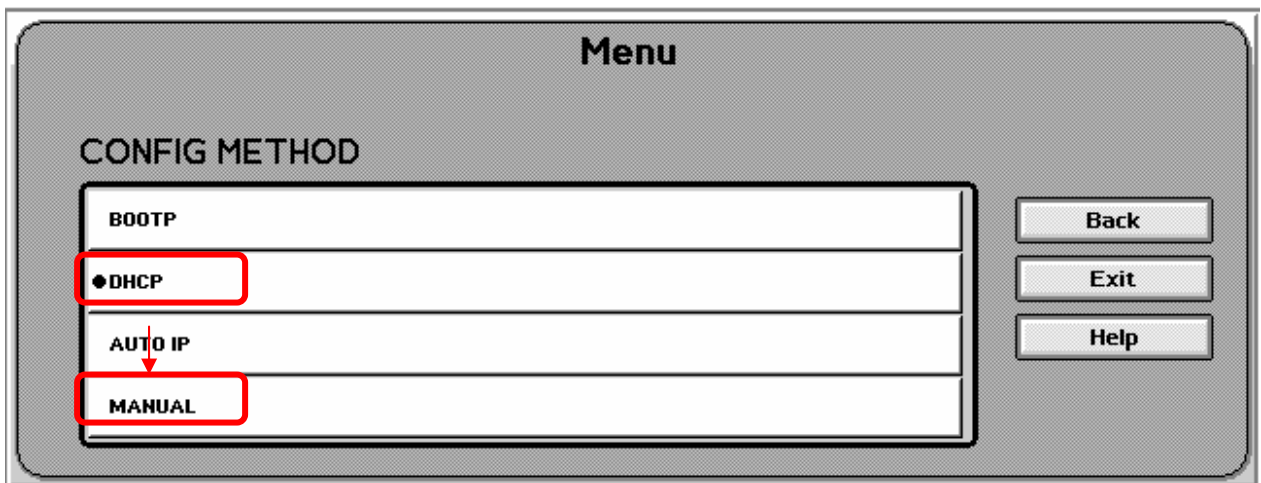
PCL	(20010402)
PCLXL	(20010402)
POSTSCRIPT	(20010402)
PDF	(20021216)
XHTML	(700)
MIME	(700)
DIMM Slot 1:	512 MB DDR
DIMM Slot 2:	Empty
Card Slot 1:	32 MB F/W FLASH: 2 MB
Card Slot 2:	Empty
Card Slot 3:	Empty
EIO 1:	HP JetDirect J7934A
EIO 2:	HP Scanner Processor Card
Internal Disk:	HP J6073A: 18 GB
Internal Fax	
DISK Storage:	19077 MB Capacity
CARD SLOT Storage:	2 MB Capacity
LDAP Gateway	Not Configured
SMTP Gateway	smtp.mail.yahoo.com
hp MFP Digital Sending Server	Not Configured

5. Install the EasyDS Module

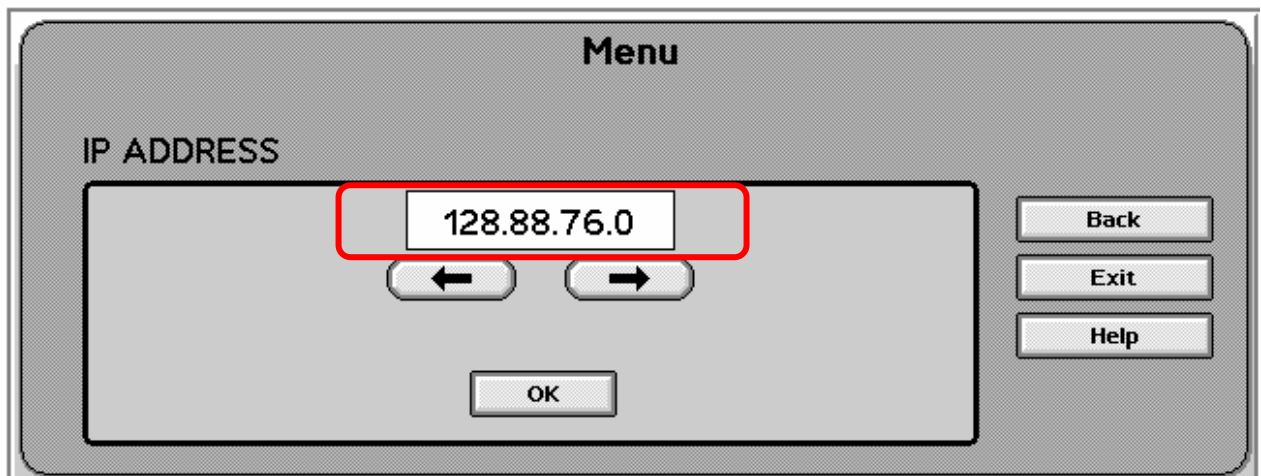
Note: *Strictly for VENTURE CORP installation process*

Please take note that, before downloading the EasyDS to the MFP, here are the steps taken:

1. Go to MFP Front Panel, Click the **Menu** button
2. Select the **Configure Device -> I/O -> EIO JetDirect Menu -> TCP/IP -> Config Method**
3. The default MFP TCP/IP Configuration method is “DHCP”, as shown in figure below.



4. Please change the Configuration method to “Manual”
5. Go to **Configure Device -> I/O -> EIO JetDirect Menu -> TCP/IP -> Manual Settings -> IP Address**
6. Set the MFP IP Address manually, the pre-defined IP Address in VENTURE CORP is 128.88.76.__ (for the last digit of the address, please contact your Network Administrator). Click OK

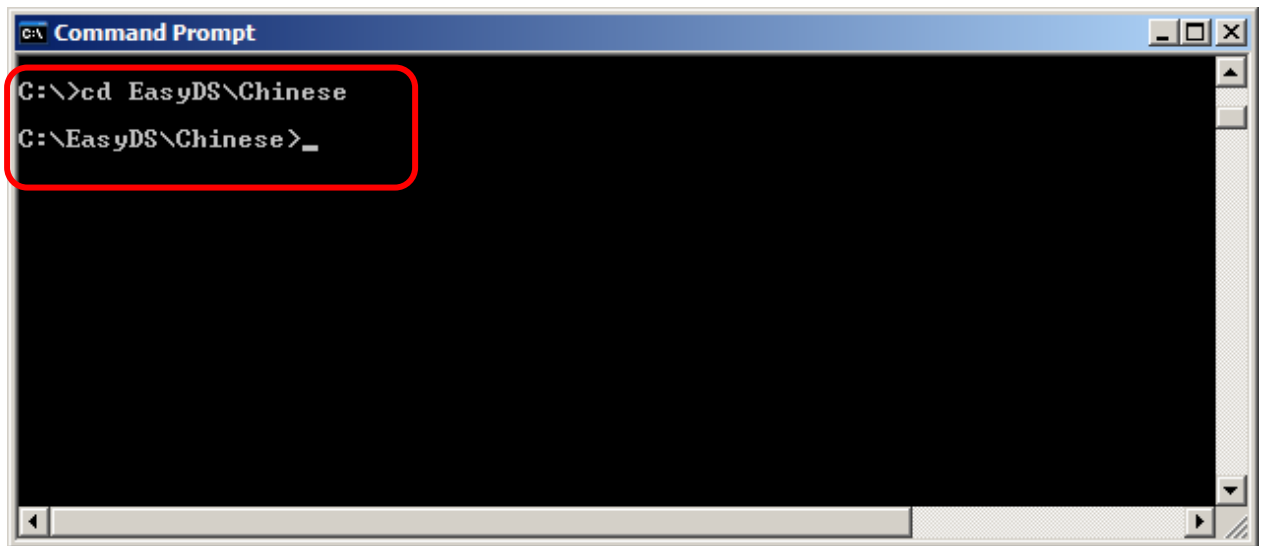


Steps taken to install the EasyDS to the MFP:

- For the example shown below, the IP Address of the MFP is 192.168.0.102
- *Assume* that the required files to be installed to the MFP are located in C:\EasyDS\Chinese folder. E.g. Installing the Chinese version in this case

Step 1:

Start -> Run-> cmd and Go to C:\EasyDS\Chinese folder (Figure 1)

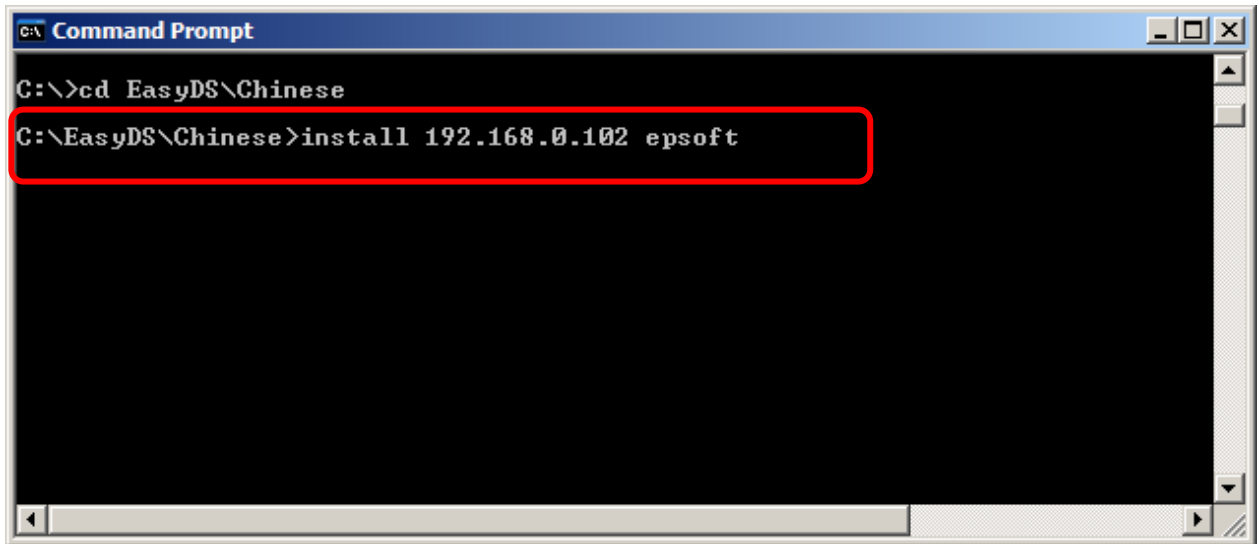


```
C:\>cd EasyDS\Chinese
C:\EasyDS\Chinese>_
```

Figure 1

Step 2:

Type: install<space><IP Address><space><password><Enter> (as shown in Figure 2)

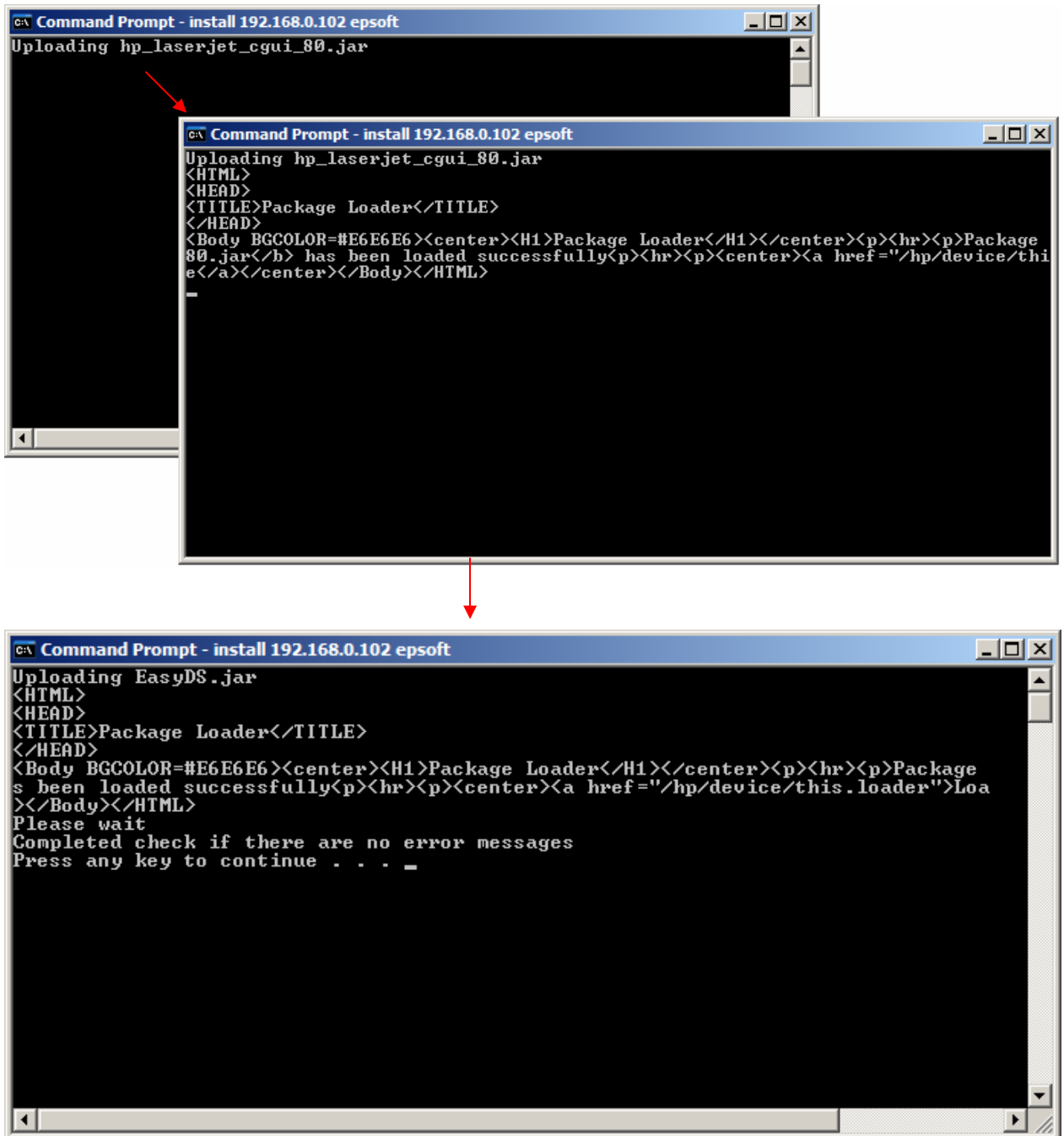


```
C:\>cd EasyDS\Chinese
C:\EasyDS\Chinese>install 192.168.0.102 epsoft
```

Figure 2

Step 3:

Please wait for 4~6 minutes, until the firmware and the setup program are installed to the MFP (as shown Figure 3)



```
Command Prompt - install 192.168.0.102 epsoft
Uploading hp_laserjet_cgui_80.jar

Command Prompt - install 192.168.0.102 epsoft
Uploading hp_laserjet_cgui_80.jar
<HTML>
<HEAD>
<TITLE>Package Loader</TITLE>
</HEAD>
<Body BGCOLOR=#E6E6E6><center><H1>Package Loader</H1></center><p><hr><p>Package
80.jar</b> has been loaded successfully<p><hr><p><center><a href="/hp/device/thi

Command Prompt - install 192.168.0.102 epsoft
Uploading EasyDS.jar
<HTML>
<HEAD>
<TITLE>Package Loader</TITLE>
</HEAD>
<Body BGCOLOR=#E6E6E6><center><H1>Package Loader</H1></center><p><hr><p>Package
s been loaded successfully<p><hr><p><center><a href="/hp/device/this.loader">Loa
</Body></HTML>
Please wait
Completed check if there are no error messages
Press any key to continue . . . _
```

Figure 3

Once the EasyDS localization files have been installed to the MFP, you will be able to see the Menu of localization version is shown in the MFP Front Panel (as indicated in figure below).

To check the Program version, you can refer to version number shown at the “Welcome” image.



Note: In case of failure in downloading the files

- A. Please reboot the MFP,
- B. When the MFP is ready, please wait for about 2 minutes for uninstall the files.
- C. Go to Windows Command Prompt and go to folder where the files are located and type “**uninstall<IP Address><password>**”, e.g. **uninstall 192.168.0.102 epsoft**.
- D. After uninstall, please reboot the MFP, and repeat the installation process.

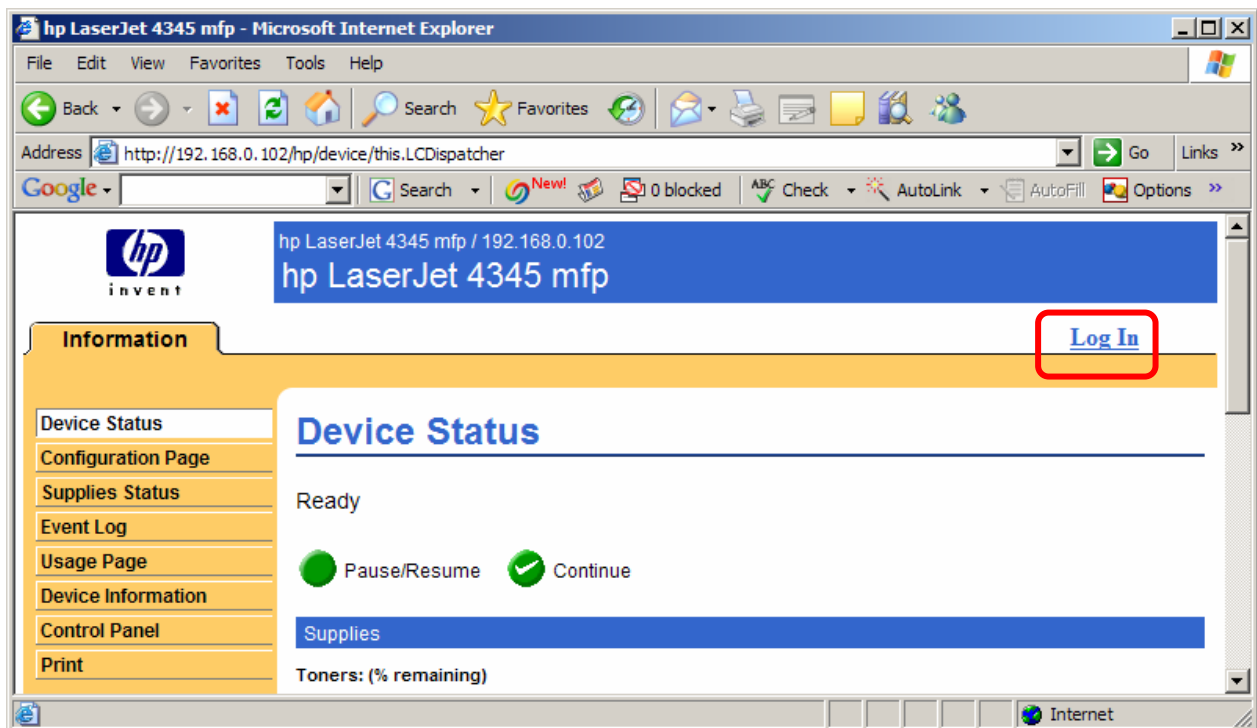
6. Important Actions upon EasyDS Installation

Here are few actions need to be taken once EasyDS has been installed to the MFP:

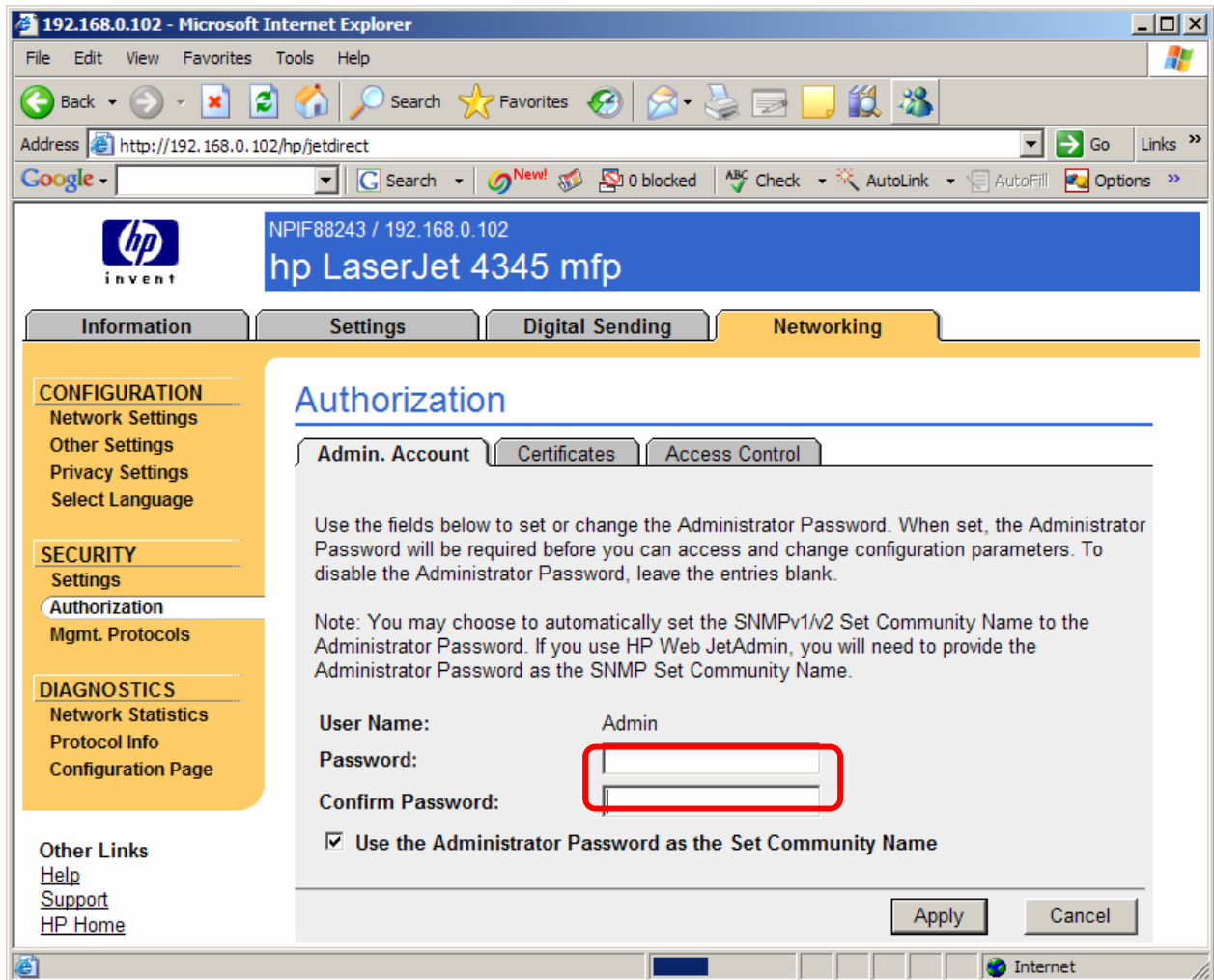
1) Reset the MFP password to Default settings (Blank password)

To check whether the MFP is password protected,

- a. Open the Internet web browser and key in the MFP IP Address, if the MFP is password protected, you will be able to see the “Log In” link at the top-right corner of the page.



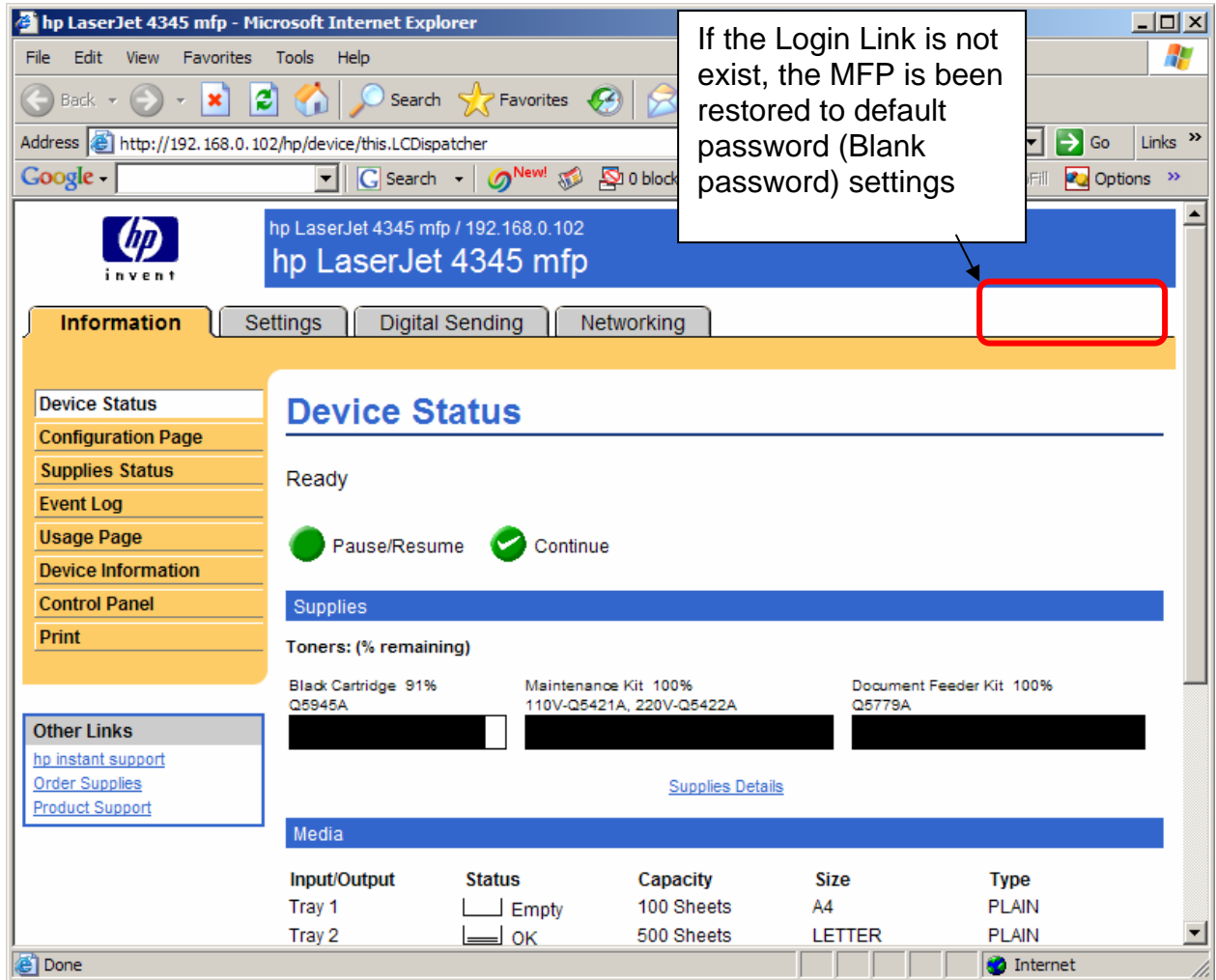
- b. Click Log In
- c. Select the Networking tab -> Security -> Authorization
- d. Delete the existing Password and Confirm Password (shown in figure next page)



e. Click Apply

To check whether the MFP password has been restored to default (Blank password)

- a. Open a new Internet web browser, and insert the MFP IP Address
- b. Check whether the Log In link is not existed anymore, and therefore the MFP is been restored to default password (Blank password) settings (Please refer to the figure shown in the next page)



If the Login Link is not exist, the MFP is been restored to default password (Blank password) settings

hp LaserJet 4345 mfp / 192.168.0.102
hp LaserJet 4345 mfp

Information Settings Digital Sending Networking

Device Status
Configuration Page
Supplies Status
Event Log
Usage Page
Device Information
Control Panel
Print

Other Links
[hp instant support](#)
[Order Supplies](#)
[Product Support](#)

Device Status

Ready

Pause/Resume Continue

Supplies

Toners: (% remaining)

Black Cartridge 91% Q5945A	Maintenance Kit 100% 110V-Q5421A, 220V-Q5422A	Document Feeder Kit 100% Q5779A
-------------------------------	--	------------------------------------

[Supplies Details](#)

Media

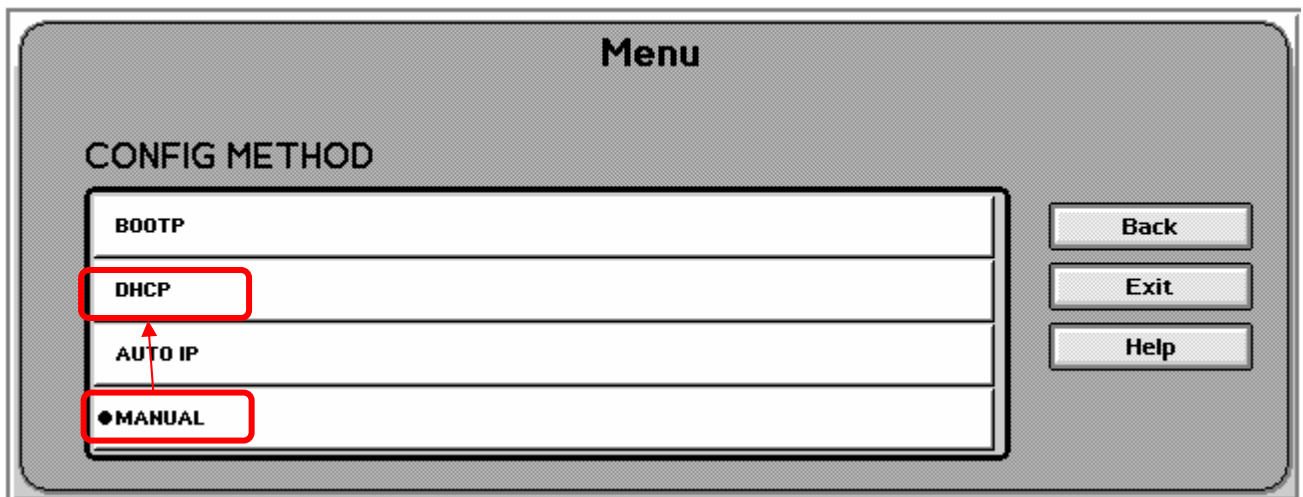
Input/Output	Status	Capacity	Size	Type
Tray 1	Empty	100 Sheets	A4	PLAIN
Tray 2	OK	500 Sheets	LETTER	PLAIN

- 2) Reset the MFP Configuration Method to DHCP

Note: *Strictly for VENTURE CORP installation process*

Please take note that, after downloading the EasyDS to the MFP, here are the steps taken:

1. Go to MFP Front Panel, Click the **Menu** button
2. Select the **Configure Device -> I/O -> EIO JetDirect Menu -> TCP/IP -> Config Method**
3. The current MFP TCP/IP Configuration method is “Manual”, as shown in figure below.



4. Please change the Configuration Method back to “DHCP” (Default setting)

7. List of Supported MFP

Below is the list of the supported MFP model with the Firmware Datecode.

Note: Please make sure that the MFP is using at least the same Firmware Datecode (or higher firmware) shown in below.

MFP model	Firmware Datecode
LJ4345MFP	20060411 09.051.6
CLJ4730MFP	20060214 46.121.2
LJ9040MFP	20060411 08.051.7
LJ9050MFP	20060411 08.051.7
CLJ9500MFP	20060411 08.051.7

8. Limitations

- i. Please ensure that the minimum requirements are fulfilled before installation, (You are required to perform MFP pre-check on System Requirements as shown in Section 4).
- ii. By using the function of localization version, the response time of the MFP might takes 1~2 seconds slower than the original function of English version.

9. Tips and Troubleshooting

- A. Upon EasyDS installation on MFP, In case if the MFP engine or machine failure occurred due to some hardware problems, Please make sure to initialize the MFP's Harddisk before the MFP is dismantled for fixing process.

To initialize the Harddisk *

CAUTION: A hard-disk initialization deletes the following information: all stored copy jobs, the local address book (e-mail addresses), the speed-dial list (fax numbers), and the Java™ applet files.

1. Turn the MFP off and then on.
2. When the memory count appears on the control-panel display, press the right-hand side of the START button until all three LEDs are lit. Release the START button.
3. Press 5 one time. INITIALIZE DISK appears on the control-panel display.
4. Press 6 one time. A series of asterisks appears on the control-panel display. Wait for the MFP to complete its initialization sequence.

*Taken from official hp website.

- B. If you encountered errors during installation process, turn off the MFP for a minute and try rebooting the MFP. Start the installation process all over again from the initial step. However, if the problem persists, feel free to contact us at support@myepsoft.com and please provide us with detailed information of the memory of MFP, Hard Disk size, and Firmware version. We will try to respond to you as soon as possible.